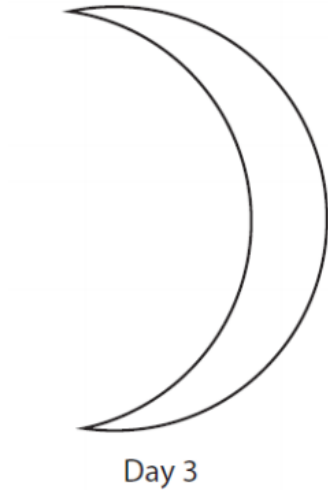


1 **Astronomy**

Sketch how the Moon appears in the northern hemisphere, three days after the new moon.

The moon should be drawn halfway between new moon and half-full moon



(check on 25th April – this is what the moon should look like)

2 **Citizenship studies**

Which of the following is a Commonwealth country?

- A** India
- B** China
- C** Turkey
- D** Poland

A. India

3 English language

Write about a time when you, or someone you know, tried to hide something.

Your response could be real or imagined.

**Your response will be marked for the accurate and appropriate use of vocabulary, spelling, punctuation and grammar.*

A. No "right" answers for this – if you want to compare then swap answers with a friend

4 Geography

UK landscapes are constantly being changed by different processes.

(a) (i) State **one** example of a sedimentary rock.

- A** schist
- B** slate
- C** basalt
- D** chalk

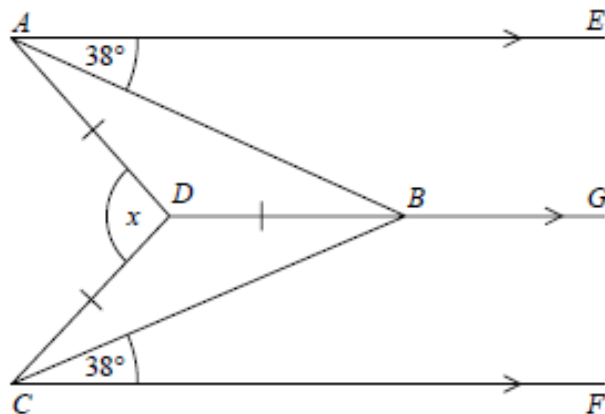
(ii) State **one** characteristic of a sedimentary rock.

A. D: chalk

Any of the following are correct:

- **Formed in layers**
- **Compacted**
- **Oldest rocks at the bottom, youngest at the top**
- **May contain plant or animal fossils**

5 Maths



AE , DBG and CF are parallel.
 $DA = DB = DC$.
Angle $EAB =$ angle $BCF = 38^\circ$

Work out the size of the angle marked x .
You must show your working.

- i. Because lines AE and DG are parallel the angle ABD must equal angle BAE , i.e. 38°
- ii. Triangle ADB is isosceles, so $DAB = DBA = 38^\circ$
- iii. Sum of angles in triangle = 180° , so angle $ADB = 180 - (2 \times 38) = 104^\circ$
- iv. Same applies to angle CDB
- v. Angle $x = 360 - (2 \times 104) = 152^\circ$

6 Physical education

Which one of the following muscle fibre types is best suited for use in a 100 m sprint?

- A Type I
- B Type IIa
- C Type IIx
- D Slow twitch

A: type 1 muscle fibres (fast glycolytic)

7 Psychology

Figure 1 shows an image of the human brain with two areas labelled.

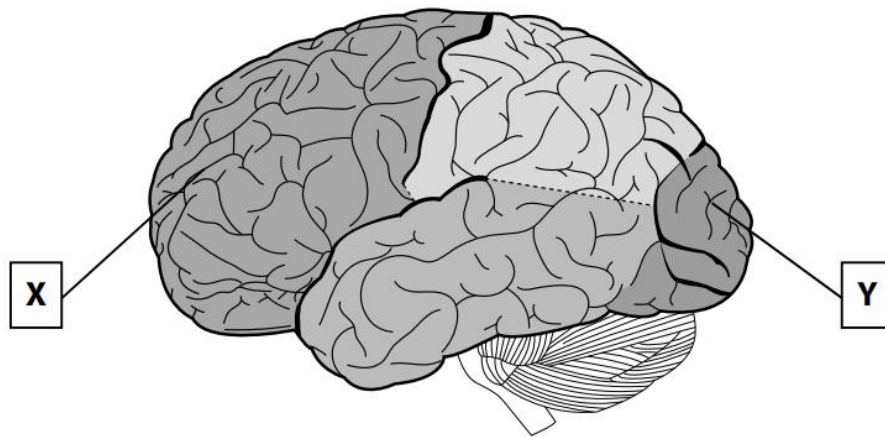


Figure 1

(a) Identify **one** function of the **area X** of the brain.

- A Balance/coordination
- B Interpreting auditory information
- C Planning/organisation
- D Sensory perception

C: this is the prefrontal area of the frontal lobe

8 Science

Antibiotics can be used to treat Chlamydia, which is a sexually transmitted infection.

(a) What type of pathogen causes Chlamydia?

- A bacteria
- B fungus
- C protist
- D virus

A: bacteria (Chlamydia trachomatis)