



Welcome to the Looking Up Trail



You could use this trail on your phone or print out a copy.

Children or Young People would benefit from taking a plain paper notepad and pencil with them.

The trail takes in a range of features in Brancepeth Village. After looking at your own home, you could begin near the Old Railway Line and end at St.Brandon's Church or you can do them in any order.

There are lots of stopping points. You don't have to do them all! You might do a few or you might look at different places over the week.

Whatever you do, have fun!

There are discussion points.



Ways to respond.

Ideas for how you could follow this up yourself.



If you're with your family or if you have parental permission, you could email any photos of you on the trail of anything you draw or make or find out to the Brancepeth Alive email for use on the webpage.



BRANCEPETH ALIVE! STORY TRAILS

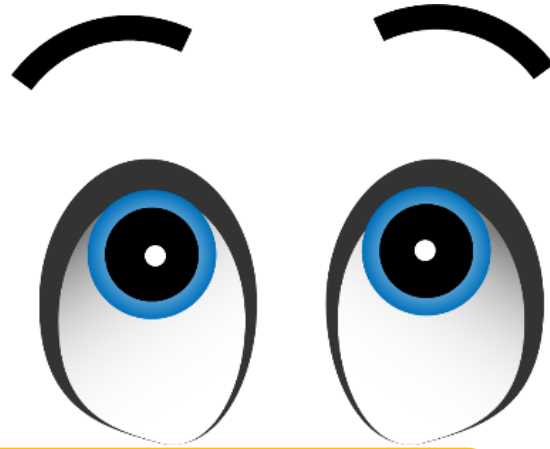




BRANCEPETH ALIVE! STORY TRAILS



Your House



Young
Children

- What do you see if you stand outside and look up?

Primary
Children

- We have spent a lot of time in our houses lately. Our homes are important to us.
- Where else have you or your family lived?



Young
People

- Sketch your house, focusing on what you can see when you look up.
- If you could live anywhere where would you choose? Design your dream home.

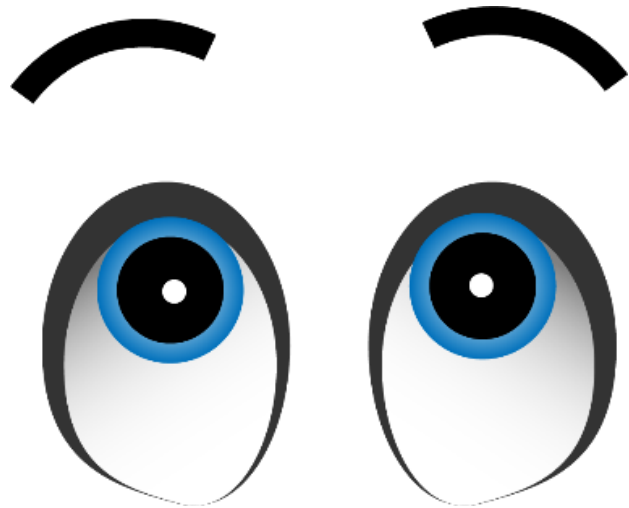


To think about....

House or home? Does it matter where
we live?



The Old Station



Young
Children

- How many chimneys can you spot?
- Share the story of The Three Little Pigs.



Primary
Children

- Look at the chimneys.
- Can you put them in order, oldest to newest?
- How did you decide?



Young
People

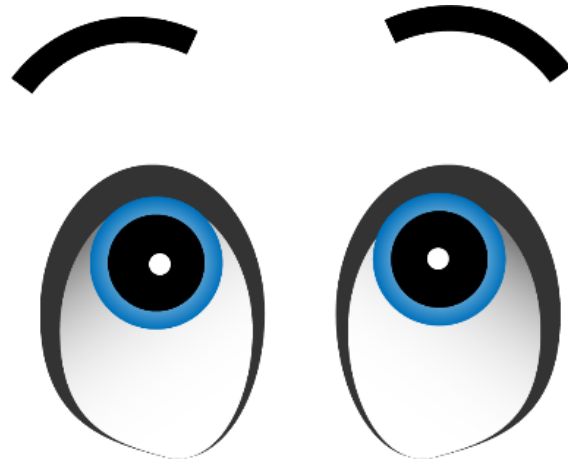
- What do chimneys tell you about the age of a house and changes over the years?
- What are the drawbacks or benefits of chimneys?



If you were designing your own house, what type of fire/heating would you use?



Lamp Posts



Young
Children

- How many lamp posts can you spot?
- What is missing from this one? Can you draw a straight line like a lamp post?



Primary
Children

- Look up at the lamp post and think about what is missing?
- Design your own lamp post that would fit well in Brancepeth Village.



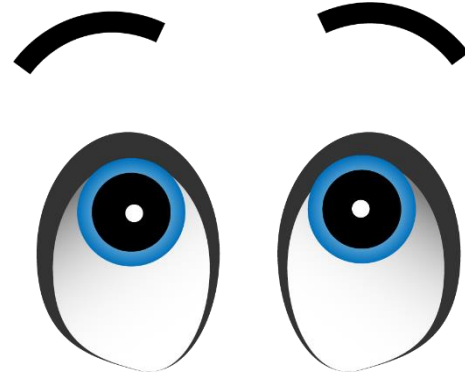
Young
People

- Should the local council consider eco-friendly lighting which switches off overnight as some places do? What might the arguments for and against be?





Goodwell Lea



Young
Children

- Can you spot the solar panels or aerials?
- What do they do?



Primary
Children

- Look at the houses on Goodwell Lea. A number of them have solar panels.
- Can you work out which way the houses are facing? You might use a compass app. Why are the solar panels on this side of the roof?



Young
People

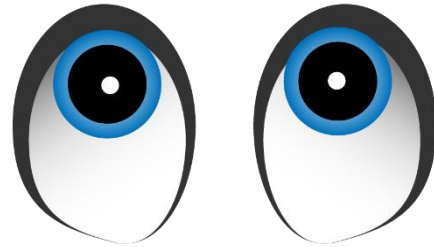
- What can you tell about the ages of the housing?
- How can you tell whether the estate was all built at the same time? Which historical period are they imitating?



Think about... In the story, the friends lower their friend through the roof. If you had to do this, which house would you choose?



Pylons



Young
Children

- Can you count the pylons?
- What else can you spot that is very tall?



Primary
Children

- How many pylons and telegraph poles can you count?
- What do they do and why are they located in the middle of beautiful fields?



Young
People

- Pylons have often been controversial. Imagine you are a farmer and the electricity company wants to site pylons across your fields.
- What points would you raise for and against?



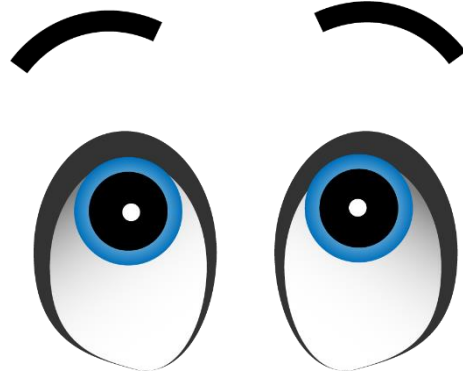
Where does the word pylon come from? Who first designed pylons? What are they based on?

Construct your own pylon at home. Lego, straws, pasta and marshmallows, rolled up newspaper...whatever you can find.





Russell Close



Young
Children

- What do we call this type of house?
- Can you draw lines like the roof shape?



Primary
Children

- When were these homes built?
- Why do some buildings have dates set high into the walls?



Young
People

- Think about the type of village Brancepeth is? Why would this type of housing be built?
- Which is the newest building in the village? How does its design reflect the current age?

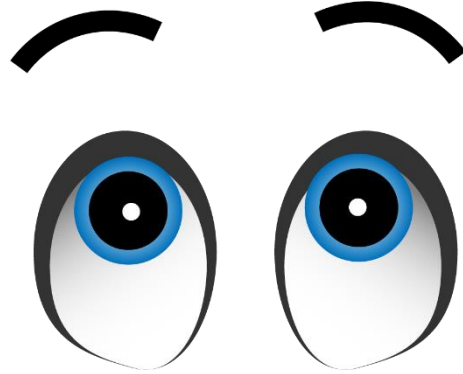


Why do we build different types of housing?

How many different types of accommodation can you come up with? Can you find one for each letter of the alphabet? Which have you stayed in? What is the most unusual place you can think of? <https://www.coolstays.com/>



What's Missing?



Young
Children

- Can you spot what is missing?
- It would make a loud noise. As you walk, can you hear anything else that makes a noise?



Primary
Children

- How can you tell what this building used to be?
- What have you missed about going or what have you enjoyed since going back? Why is it so important?



Young
People

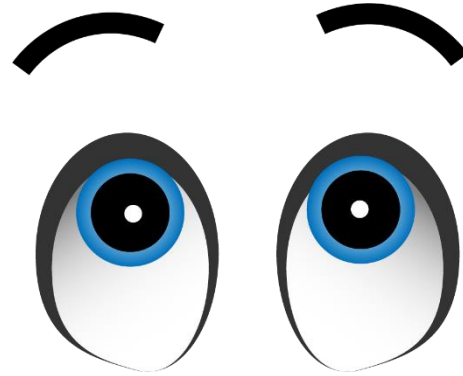
- How can you tell what this building used to be?
- Reflect in whatever way you want on what you have missed about going to yours this term.
- You might want to sketch the beautiful woodwork and roofs on these buildings.



Think about... If you could plan a new curriculum, which subjects would you want everyone to learn?



Rows together



Young
Children

- Count the chimneys, the windows or the doors?
- Make a mark for each one you count.



Primary
Children

- Can you spot where brick is peeping out under plaster?
- What might this tell you about how the houses have changed?



Young
People

- Look up and notice the differences and the similarities between the houses in this row.



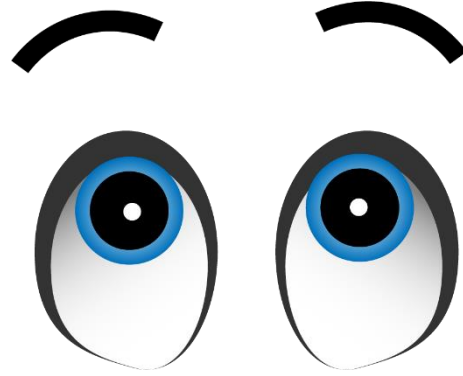
What work did children used to do in this country? Can children work today in the UK? What work do children around the world have to do?

Write about or draw what work you would like to do in the future. How might you work towards this?





The Castle



Young
Children

- Walk around the castle, what can you see?
- Draw any of the lines you can see.



Primary
Children

- Walk around and look up, noting features you find interesting.
- Draw the lines you see and create your own pattern.



Young
People

- Walk around looking up at what you usually overlook.
- Write a haiku about this castle or sketch a specific feature that interests you.



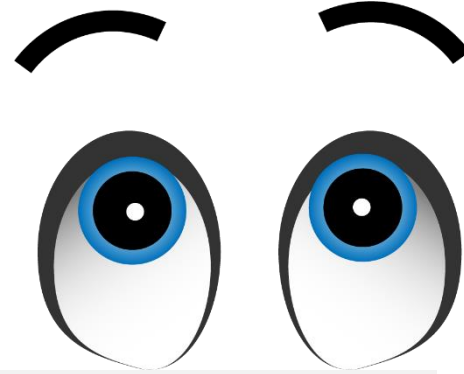
Choose a question that interests you about castles and find out more.

Plan your own imaginary Mission Impossible to help your friend get in ...or escape from the castle.





St Brandon's Church



Young
Children

- Can you spot the weather vanes?
- Can you draw a cloud or the sun?



Primary
Children

- What is the most interesting feature you can see when you look up at St Brandon's Church and can you draw it?
- What is special about this building?



Young
People

- Look up to the tower. What different reasons are there for having bells?
- Can you see the flagpost? Design a flag for the church...or your own house.



Think about... If you were showing a friend around the village, where would you choose to stop and look up.